

NuRemote Display

User Manual

【Installation and Connection】

1. Please download PC Client software and install it @

<https://nugenstech.com/nuremote/>

You will need to set up the PC connection password when installing the software.

2. Please download the NuRemote Display App on Google Play or Apple App Store.

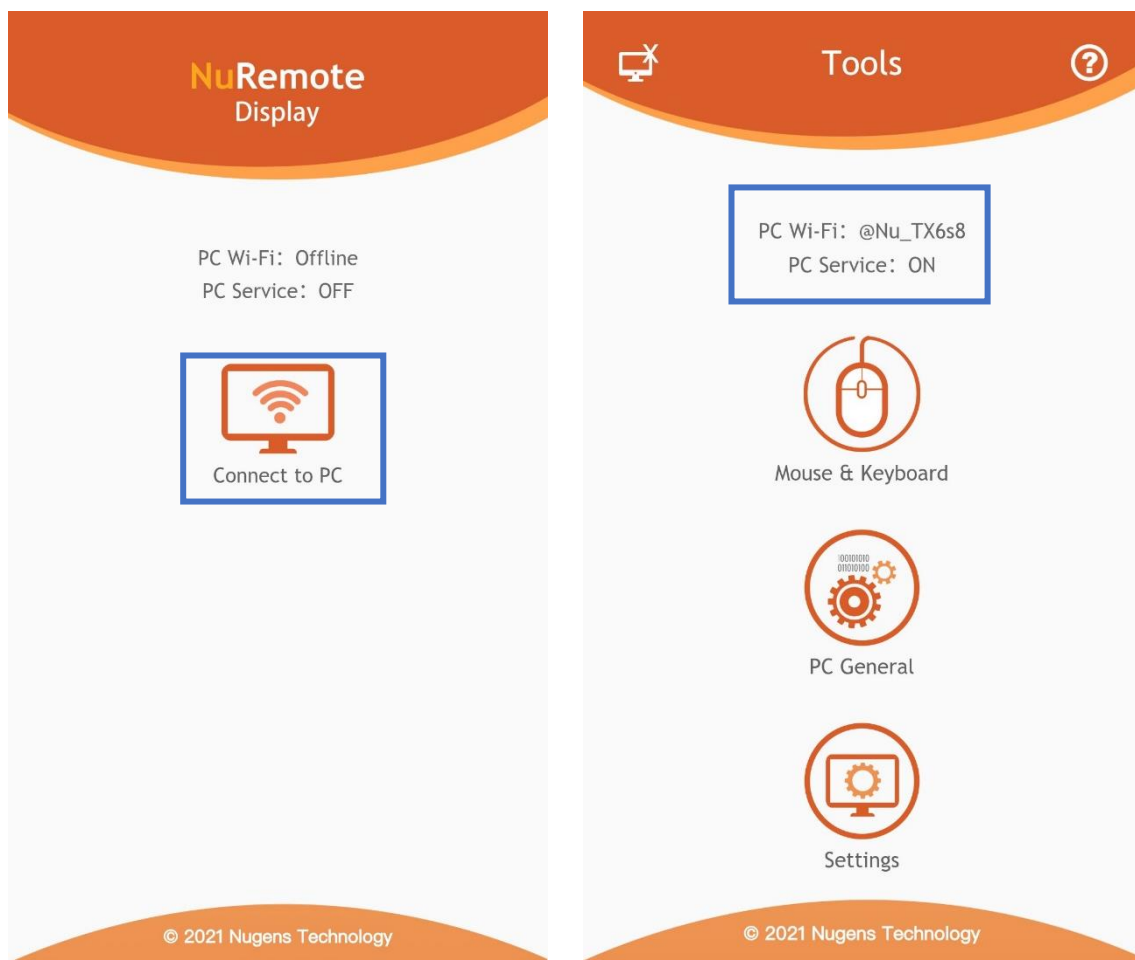


3. After installing the PC Client software, this information will show on the PC.



4. Launch the NuRemote Display App, click on the "Connect to PC" icon, find the Wi-Fi that has the same name as the SSID and enter the connection password you set up when installing the PC Client software.

After connected successfully with the Wi-Fi, please go back to the NuRemote App.



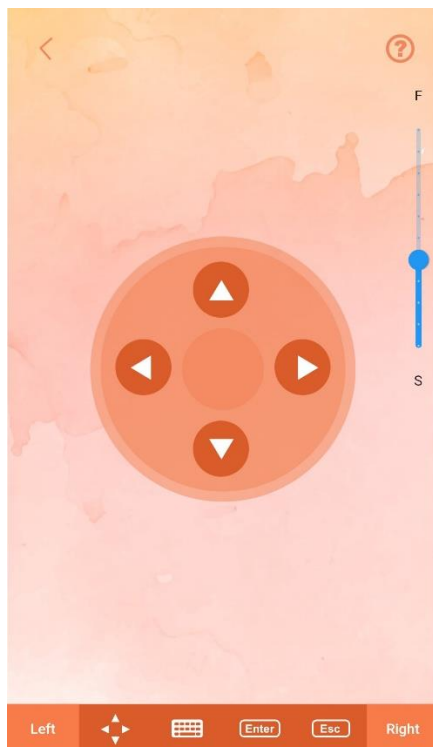
【Tools】

1. Mouse & Keyboard

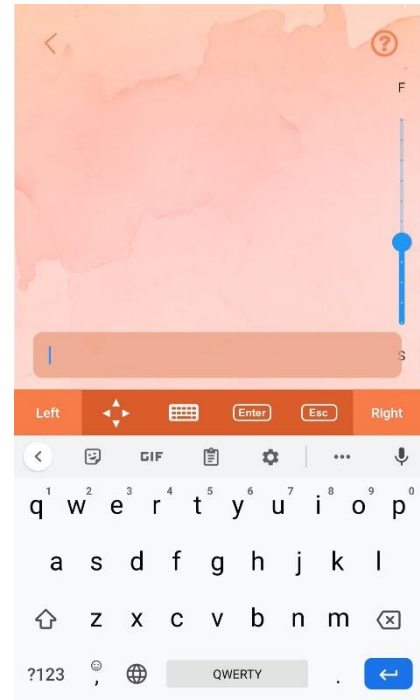
- (1) Back: Go back to previous page
- (2) Help: Online support page
- (3) Mouse Cursor Speed: If your pointer is moving too slow or fast for you, then you can easily select a pointer speed you want instead.



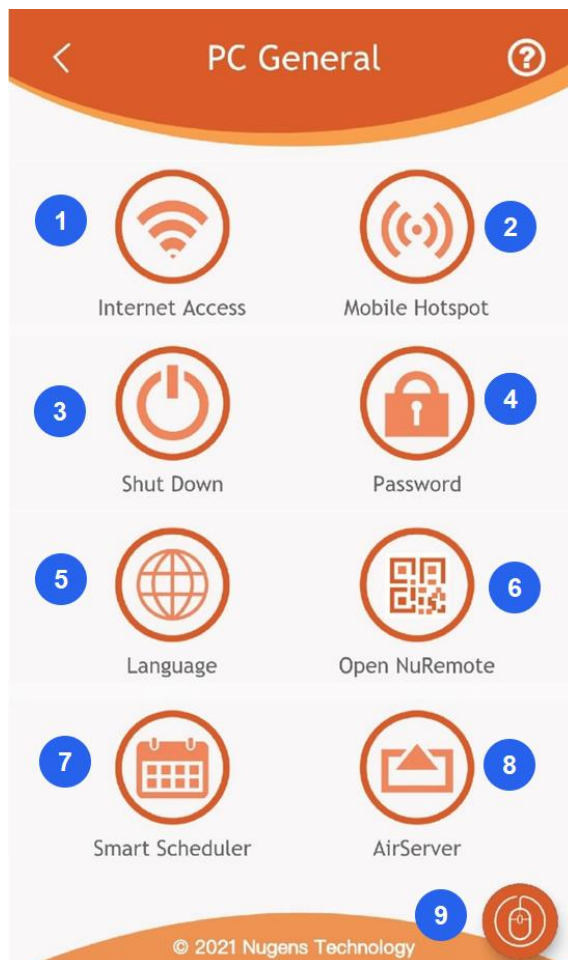
- (4) Left: Left click
- (5) Arrow Keys: Designated to move the cursor in a specified direction.



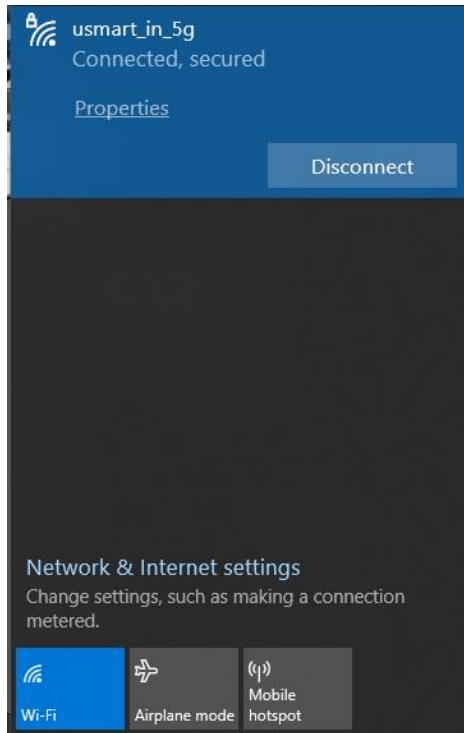
- (6) Keyboard: input function used to enter characters.
- (7) Enter: To confirm or to send
- (8) ESC: To exit or to close
- (9) Right: Right click



2. PC General

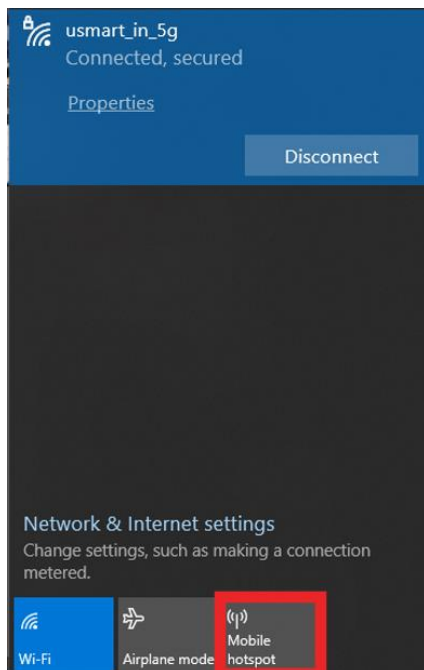


(1) Internet Access: Open Wi-Fi connection list

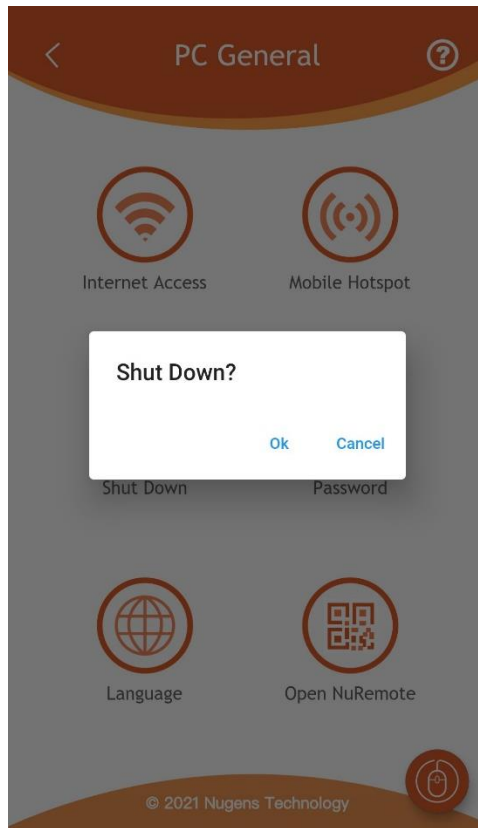


(2) Mobile Hotspot: Open Windows 10 built-in hotspot

Note: Before enabling the Mobile Hotspot, please connect to the Internet first.

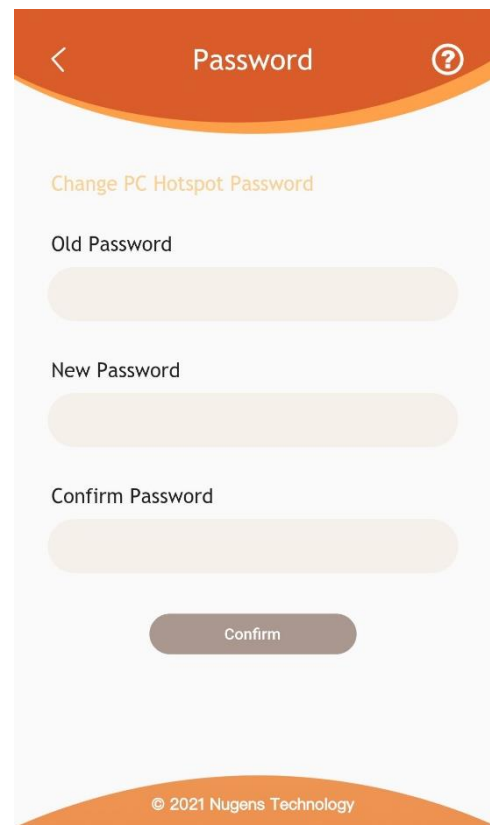


(3) Shut Down: Closes all apps and turn off the PC.



(4) Password: (PC Hotspot Password)

When installing the PC Client software, you must set up the hotspot connection password; you can change the connection password on this page.



- (5) Language: Change the app language; NuRemote app is available in English, Japanese, and Traditional Chinese.



- (6) Open NuRemote: Open NuRemote PC Client software in one-click.



- (7) Smart Scheduler: Open SmartScheduler Digital Signage software in one-click
- (8) Airserver: Open AirServer Screen Mirroring Receiver software in one-click.
- (9) Switch to Mouse Mode.

3. Settings

- (1) Screen: Turn ON/OFF the screen.
- (2) Windows Update: When launching the NuRemote PC client, the Windows update service will be disabled, click “Check for updates” to enable it. If there are any updates, the system will start to update automatically.
- (3) Brightness: Drag the slider to the right or left to adjust the brightness.
- (4) Note: Only support InnoLux’ s screen.

