



## 360° AI Tracking Mount Holder Quick Installation Guide



**VTR360**

## ▼ Disclaimer

The specifications and information contained in this manual are for reference only, and the content and information are subject to change without prior notice.

If other product or company names appear in the content of the manual, they are only used to describe the product description, and there is no intention of infringement.

Nugens reserves the right to update this disclaimer at any time.

## ▼ Warnings and Precautions

The installation and use of this product must strictly abide by the electrical safety regulations of the country and the region of use.

The main body of this product and the remote control have built-in batteries, please recycle, or scrap them according to national regulations.

## ▼ Instructions

After taking out the product, install it according to the installation manual.

Please keep it away from heat sources and humid environments.

Product performance may vary in different environments.

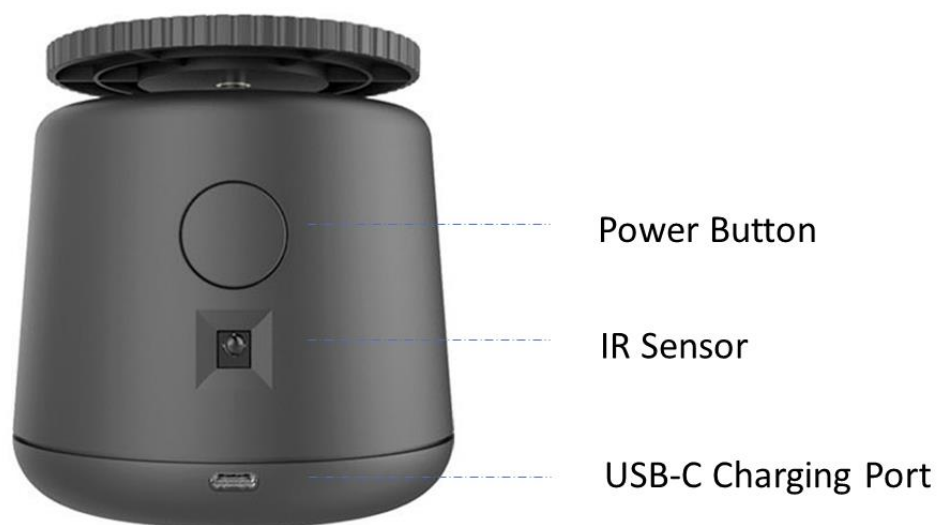
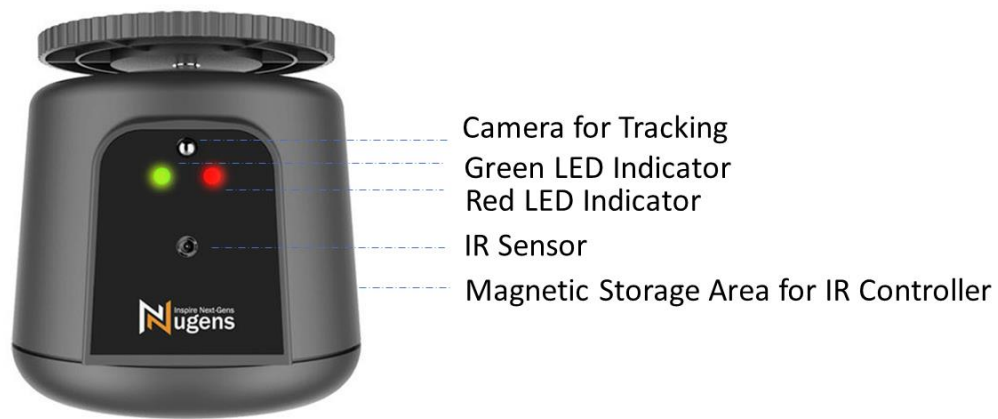
## ▼ Safety Instructions

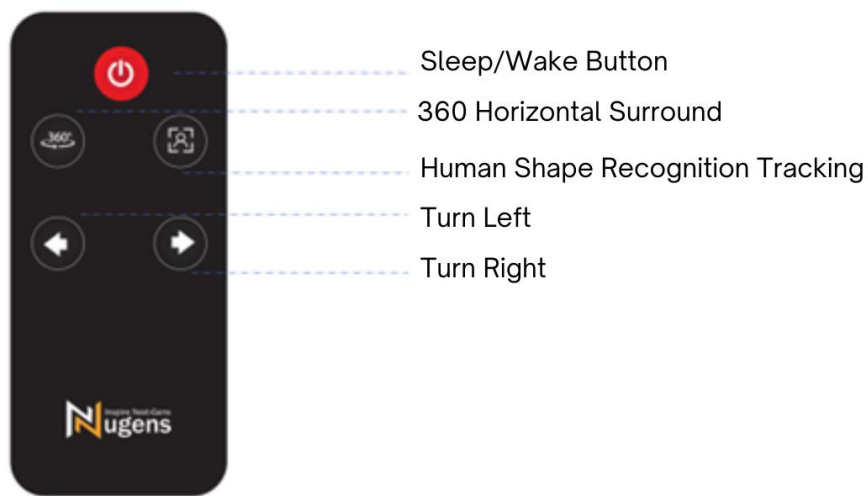
Before using this product, please read and follow the instructions below to ensure safe operation.

- Please use the charging cable provided by the original factory to avoid damage to the product.
- Do not attempt to repair or disassemble any components of this product by yourself, otherwise it may cause product damage or personal injury, and will also invalidate the warranty of this product.
- Before cleaning this product, unplug the charging cable and turn off the power first.
- Please use a soft cloth to remove the dust on the lens; do not spray the cleaning fluid directly on the interface of the charging cable, to avoid infiltration and cause electric shock.
- The product is a high-precision control device, please place it in an unobstructed and stable place to prevent it from falling and causing abnormal malfunctions.

## Overview

### [ Appearance ]





Universal Clip Holder for Phone and Pad

- The Round Turntable under the fixture is a detachable item, and 2 extra units are included, please adjust it according to when using.
- Diagram is for illustrative purposes, please refer to the actual product.

## [ Specification ]

Power Button	On VTR360 / IR Remote
Range of IR Remote	2m
Wireless	Infrared 38kHz
Input Voltage	5V 800mA
Charging Port	Type-C
Battery Capacity	3000mAh Lithium Battery
Product Size	90mm x 87mm x 100 mm
Packaging Size	275mm x 170mm x 110mm
Product Weight	378g
Packaging Weight	2.5kg
Origin	Taiwan
Advanced Features	360° Horizontal Surround AI Tracking Human Shape Recognition & Tracking
Package Content	Tracking Mount Holder (VTR360) x 1, Round Turntable x 2, Remote Controller x 1, 1.5m USB-A TO Type-C Charging Cable x 1, Universal Clip Holder for Phone and Pad x 1, Storage Bag x 1, Installation Guide x 1



## Instructions

Thank you for purchasing the VTR360 360° AI Tracking Mount Holder.

Before using this product, please install the Universal Clip Holder and your device like tablet or phone to the 360° AI Tracking Mount Holder.

It can be equipped with a tripod according to the needs and can be locked to the 1/4 universal lock hole at the bottom of the head.

(You can choose to use the NUGENS Clip Holder or other holders.)

**Note: This product does not include a tripod.**

## [ Features & Instructions for Use ]

- ❖ To power on the 360° AI Tracking Mount Holder, press the main power switch button located on the back of the device. When the LED indicator light turns green, it indicates that the device has successfully powered on.

Alternatively, you can use the IR remote controller to power on the device. In case the device is forced to shut down due to no battery or manual power-off, you must turn it on from the back of the VTR360 before using the remote control again.

- ❖ To activate the 360° Horizontal Surround feature, press the corresponding button on the remote controller. If the device is already in a 360-degree surround, pressing the button will pause the rotation. Press the button again to restart a new 360-degree horizontal surround.
- ❖ To activate the Human Shape Recognition Tracking feature, press the corresponding button on the remote controller. The LED indicator will turn red, indicating that the automatic tracking mode has started. Once the camera lens recognizes the human shape, the device will track the moving position of the person. To turn off the tracking function, simply press the button again.

**Note** that if multiple people are present at the same time, the device will prioritize tracking the person closest to the lens. If multiple people are equidistant, the device will prioritize tracking the person who is moving.

- ❖ The Left/Right Button on the remote controller allows you to turn left or right by approximately 25 degrees each time the button is pressed.

## [ LED Indicators ]

Red LED Indicator	<ul style="list-style-type: none"><li>- Red LED indicator flashes - it indicates that the battery is low.</li></ul> <p>To recharge it, please use the original factory charging cable provided with the device.</p> <ul style="list-style-type: none"><li>- If the red light keeps flashing even already charging, it signifies that the power has been depleted, it takes around 3 mins to charge and will be back to the green LED indicator soon.</li></ul>
Green LED Indicator	<p>Green LED indicator flashes - the device is charging.</p> <p>Once the charging is complete, the LED indicator light will stop flashing and remain solid.</p>

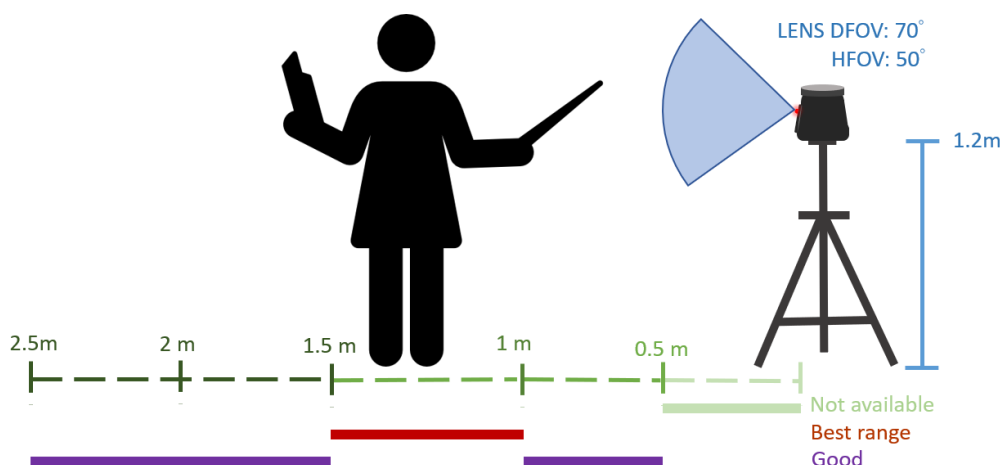
## [ Attentions ]

1. Please note that the quality of human figure recognition may be affected by the lighting conditions of the environment. We recommend using the device in a well-lit area with good visibility for optimal tracking performance.
2. The device can be used while it is charging.
3. To ensure normal charging operation, please use a charging cable with USB-A to USB-C specifications.
4. Supports Mobile Power Charging: The holder is capable of charging through a mobile power bank.
5. Before using it, please remove the battery insulation pull tab on the device and the remote controller.

## [ Advanced Explanation of Tracking Function ]

- Tracking Target: The primary tracking target is a clearly defined human shape.
- Best Tracking Distance: The best tracking distance is between 0.5m and 2.5m. The placement height of the holder should be adjusted according to the actual usage environment. (Refer to the diagram below)
- Tracking Indicator Light: A successful tracking of a human shape will be indicated by a red LED light. The tracking indicator light will turn off when the tracking target is lost.
- Reacquire Tracking Target - If the tracking light goes out and the tracking cannot be identified for approximately 5 seconds, the camera will rotate counterclockwise to search for a new tracking target. When the tracking target is located, a red LED indicator light will illuminate, indicating the resumption of tracking mode. If no new tracking target is found during the 2 rotations, it will pause at the position where it powers on, waiting to locate a new tracking target.

\*Note: The Sleep Button on the remote control serves as a power-saving sleep function, temporarily turning off the power without altering the settings prior to sleep.



## [ Power Charging Instructions ]

➤ Battery capacity is 3000mAh, and the charging time is approximately 4 hours.

\*Note 1: It is recommended to use a 5V 2A adapter for charging.

➤ When the battery is fully charged, the usage time is approximately 2 hours.

\*Note 2: While charging, the green LED indicator light will flash, and a steady green light indicates that the charging is complete.

➤ This product can be used during charging.

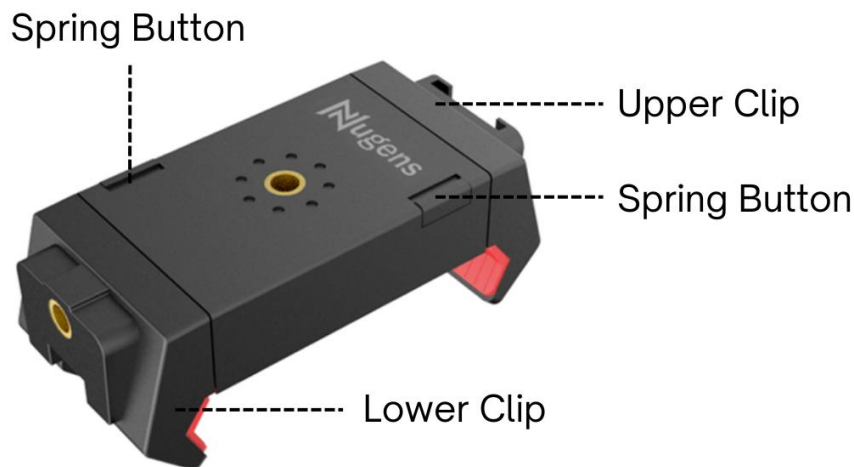
Note 3: If the red LED indicator light keeps flashing when charging, it signifies that the power has been depleted, and the device cannot function properly. Please wait until the red LED indicator light turns off and changes to a flashing green indicator light before resuming use while charging.

➤ This product is supported by power bank for power charging.

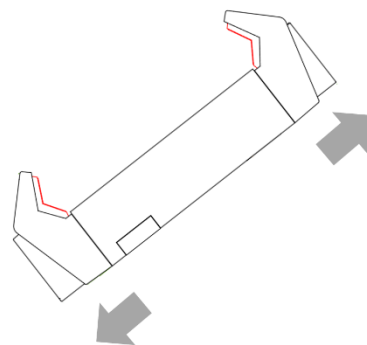
➤ Before using this product, please remove the battery insulation pull tab.

## [ Clip Intro and Operation ]

1) Press and hold the Spring Button.



2) Pull the upper and lower clips of the clip apart in the upward and downward directions (as indicated by the arrows in the diagram below).





3) Release the spring button to securely lock the extended position.

4) Press the upper and lower covers of the clip towards the center to collapse the clip.



## [ Declaration of the Presence Condition of the Restricted Substances Marking ]

### 限用物質含有情況標示聲明書

Declaration of the Presence Condition of the Restricted Substances Marking

設備名稱 Equipment name : 360度攝影AI追蹤遙控雲台						
型號 (型式) Type designation (Type) : VTR360						
單元 Unit	限用物質及其化學符號 Restricted substances and its chemical symbols					
	鉛 Lead (Pb)	汞 Mercury (Hg)	鎘 Cadmium (Cd)	六價鉻 Hexavalent chromium (Cr <sup>+6</sup> )	多溴聯苯 Poly brominated Biphenyls (PBB)	多溴二苯醚 Polybrominated diphenyl ethers(PBDE)
機構件	○	○	○	○	○	○
電路板組件	○	○	○	○	○	○
遙控器組件	○	○	○	○	○	○
其他組件(夾具)	○	○	○	○	○	○
備考1. “超出 0.1 wt %” 及 “超出 0.01 wt %” 係指限用物質之百分比含量超出百分比含量基準值。 Note 1 : “Exceeding 0.1 wt %” and “exceeding 0.01 wt %” indicate that the percentage content of the restricted substance exceeds the reference percentage value of presence condition.						
備考2. “○” 係指該項限用物質之百分比含量未超出百分比含量基準值。 Note 2 : “○” indicates that the percentage content of the restricted substance does not exceed the percentage of reference value of presence.						
備考3. “-” 係指該項限用物質為排除項目。 Note 3 : The “-” indicates that the restricted substance corresponds to the exemption.						

茲切結保證所提供之商品限用物質含有情況標示內容係經執行測試作業或採適當之品質管理措施，並備置前述相關文件，確認正確無誤後提供貴局。並同意配合貴局執行後市場管理作業所需，依商品檢驗法第49條之規定，於限期28個工作天內提供相關證明文件以供審查。

I hereby ensure that “the presence conditions of the restricted substance” provided above have been proved by testing or appropriate quality control measures, and make sure the relevant documents provided are correct and ready. Also, I agree to cooperate with BSMI, as the Article 49 of the Commodity Inspection Act stipulates, to provide the relevant documents, if needed, for verification within 28 working days when BSMI carries out the market surveillance activities.

## [ Warranty Card ]



**保固卡 Warranty Card**

詳細保固條款請參閱官網，本公司保有調整之權利。  
详细保固条款请参阅官网，本公司保有调整之权利。

Nugens reserves the right to change or to add at any time the warranty options available to you, please refer to Nugens official website.

詳しい保証項目は公式サイトをご覧ください。当社は項目を調整する権利を持っています。

[www.nugenstech.com](http://www.nugenstech.com)



感謝您購買NUGENS產品，請立即註冊始享有完整保固服務。  
保固註冊序號如下或於機身SN(部分產品貼於外包裝)

Thank you for purchasing NUGENS products, please register now to enjoy full warranty service.

The warranty registration serial number is as follows or located on the device's S/N label. (Some S/N are attached to the outer packaging)

NUGENS 製品をお買い上げいただきありがとうございます。  
完全な保証サービスを受けるには、今すぐ登録してください。  
保証登録シリアルナンバーは下記または本体シリアルナンバーラベル  
(一部商品は外装に貼付)



Official website: <https://www.nugenstech.com>

Email: [sales@nugenstech.com](mailto:sales@nugenstech.com)